

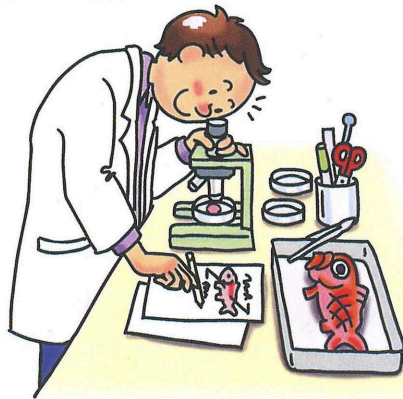
Miyazaki Prefectural Museum of Nature and History



Activities of Miyazaki Prefectural Museum of Nature and History

Survey and Research Activities, Representing the Museum's "Brain"

Researchers are studying Miyazaki's nature and history from both short- and long-term perspectives. Their works are essential parts of the Museum activities, since study results are incorporated in exhibitions, as well as reports and papers.



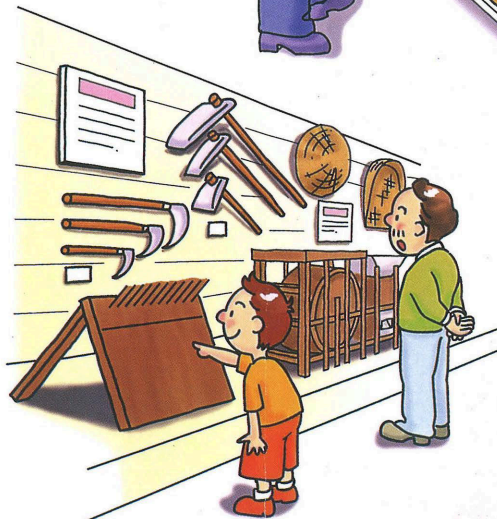
Collection and Preservation of Materials, Representing the Museum's "Heart"

Materials and artifacts are important for researching people's lifestyles and the natural environment of individual ages. The Museum collects not only originals but also replicas, photos, and films, and conserves them in the storeroom, for future use in studies and exhibitions.



Exhibition, Representing the Museum's "Face"

Exhibitions are a means to introduce collected materials and study results to the public. The Museum has developed various display methods to make exhibitions attractive and enjoyable. In a special exhibition room, in addition to the Museum's original events, those of other museums within and outside Japan are occasionally organized.



Education: Activities to Support Civic Education

The Museum organizes lectures, seminars, observation tours, workshops and other events to disseminate its study results and to introduce collected materials to the public, including school children.



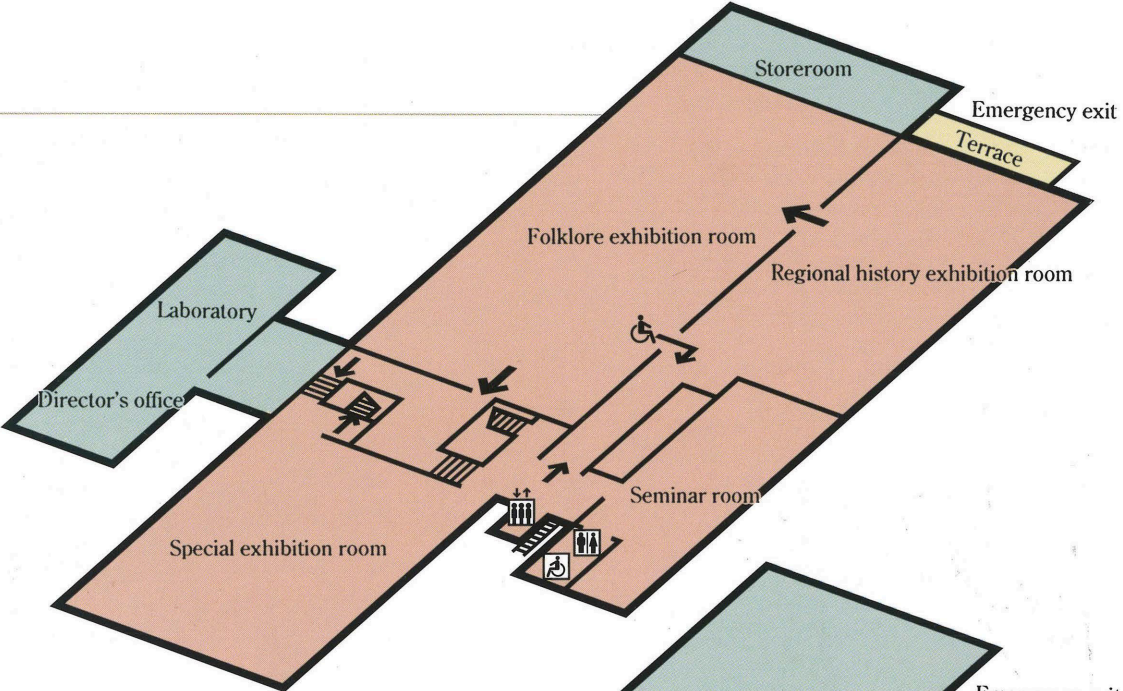
Preservation of Valuable Natural and Historical Properties

The Museum conducts academic researches of the nature and history of Miyazaki, and actively preserves documents and materials of disappearing natural and historical properties, especially those in danger of extermination/dilapidation.

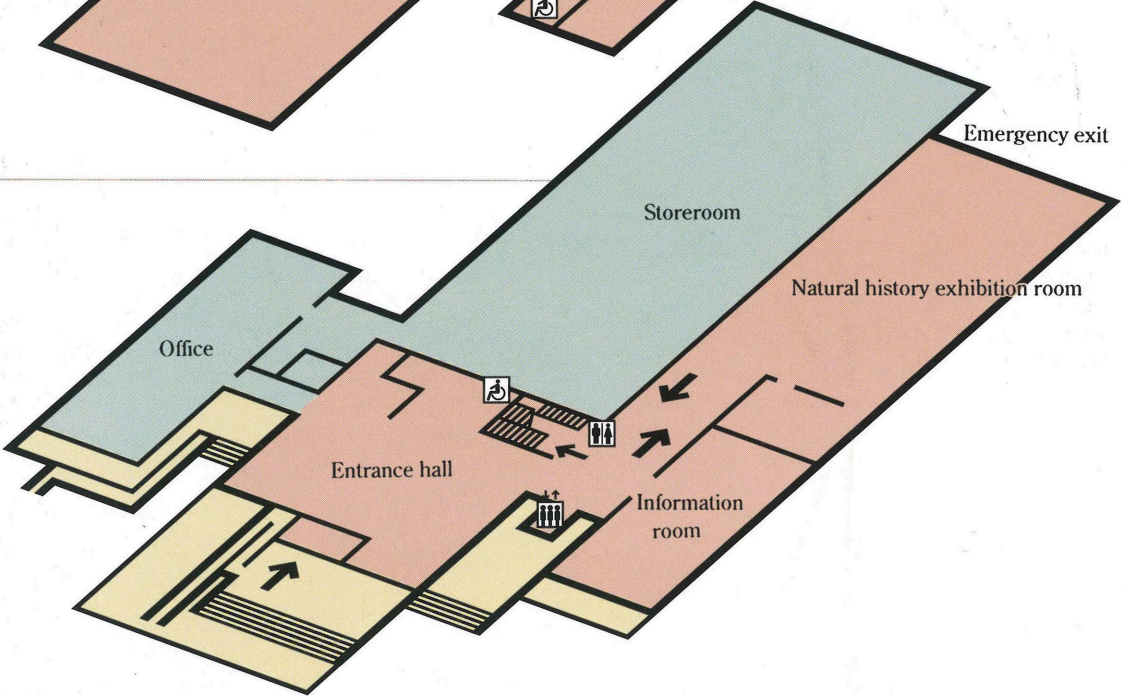


Museum Guide

2F



1F



Permanent Exhibition: Natural History

Invitation to Forests

At the entrance of the exhibition room, visitors will be welcomed by old "Tabu" trees (*Machilus Thunbergii*) and Kyushu deer in the reproduced Tabu forest of early summer. The exhibition provides visitors with opportunities to rediscover and reconfirm magnificent nature and creatures living in Miyazaki.

- An old "Tabu tree" and burgeoning young trees
- Kyushu deer



Diorama of an old "Tabu tree"

Forests in Miyazaki

This corner reproduces a laurel forest in early summer, with diverse creatures living in various levels of the forest, ranging from underground to the top of a tree. Visitors can encounter diverse animals in this diorama, as well as in films.



Super Diorama of a Laurel Forest

- Laurel forest
Diorama of a laurel forest
Diorama theater
Laurel forests in East Asia
- Beech forest
An antelope in an autumn forest



Laurel Forest Diorama Theater

Permanent Exhibition: Natural History

Waterfront Areas in Miyazaki

This corner introduces waterfront areas in Miyazaki by classifying them into rivers, wetlands, and the sea (tideland and seashores). A wide variety of creatures live in water and on land, adapting themselves to their particular environment.

- **Ecosystems in rivers**

Giant perch

- **Ecosystems in wetlands**

Diorama, reproducing Kawaminami Wetland

- **Ecosystems in the sea**

Diorama of a tideland

Diorama of a coral sea

Diorama of a seashore

Logger-head turtle



Waterfront Areas in Miyazaki

Geological Aspects of Miyazaki

Since the birth of the earth 4.6 billion years ago, the earth has undergone various crustal movements. This corner demonstrates the evidences of those movements, by displaying fossils, rocks, and minerals, together with photos of strata in Miyazaki. The Earth Theater shows the processes of evolution, based on the studies of existing fossils.



Geological Aspects of Miyazaki

- **Evidence of crustal movements**

Fossils found in Mt. Gion
"Devil's washboard"

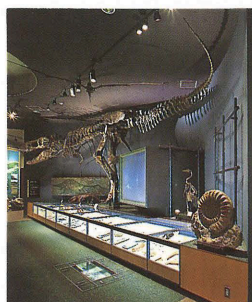
- **Ground of Miyazaki**

- **Birth of the earth and Miyazaki**

Earth Theater

- **Animal evolution**

Tyrannosaurus and Naumann's elephant



Tyrannosaurus



Seabed Model

Creatures of Miyazaki

At present, innumerable creatures live on the earth. This corner demonstrates in what processes such diverse creatures have evolved from simple organisms, with particular remarks on animals and plants seen in Miyazaki.

- **In what way have creatures evolved.**
Eight subspecies of copper pheasants around Japan
- **Animals' daily lives**
Symbiosis of cycads
Monkeys on Kojima Island
- **Plants of Miyazaki**
Plants growing only in Miyazaki
- **Animals of Miyazaki**
Wild animal kingdom in Miyazaki



Creatures of Miyazaki

Nature of Our Hometown

Local people have long cherished the landscapes of their hometowns: forests, pampas fields, brooks, and ponds. This corner introduces various creatures living in the areas close to human residence, and how local people have used them in their daily lives. For instance, people have invented various dishes, games to play, and a calendar related to such creatures. In addition, there is a section focusing on perishing animals and factors for their potential extermination.

- **Nature of our hometown**
Relationships between people and nature (film)
- **Living in harmony with nature**
Perishing creatures



Nature of Our Hometown

Permanent Exhibition: Regional History

Primitive Hunters

The exhibition on history welcomes visitors with mysterious background sounds and a reproduced scene of Izuruha Cave in primitive ages. Visitors will see brave primitive hunters, trying to catch an animal at the risk of their lives. The primeval forest is so quiet; the only sound you can hear is the murmuring sound of mountain streams.



Hunters on a rocky stretch in a Primeval Forest

Early History of Hyuga Province

Southern Kyushu has a history of over 20,000 years, which is now being unveiled by recent excavation combined with advanced scientific analysis. Although people in early history were threatened by volcanic eruptions and other natural disasters, they seem to have lived in harmony with nature. This corner shows the early history of this region, from the Old Stone Age to the *Jomon*, *Yayoi*, and *Kofun* eras, by displaying unearthed artifacts, replicas, and full-size models.

- **Primitive hunters**

Stone knives and stoneware materials

- **Early days of earthenware production**

Early *Jomon* earthenware

- **Beginning of rice planting**

Petal-shaped hut

Haniwa clay house

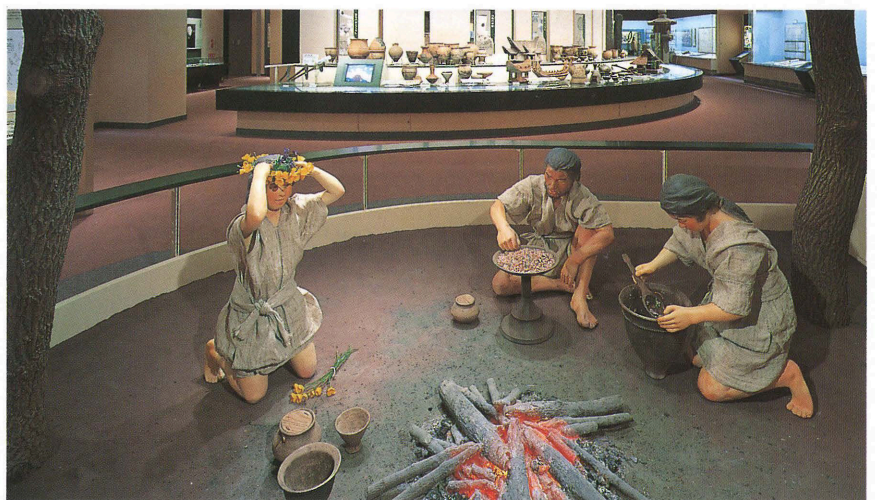
- **Ancient burial mounds in Hyuga**

Underground cave-style burial mounds

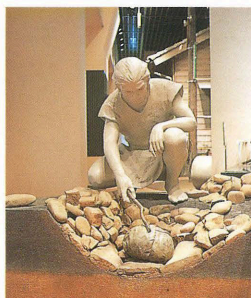
Bronze mirror

Gold and copper harness

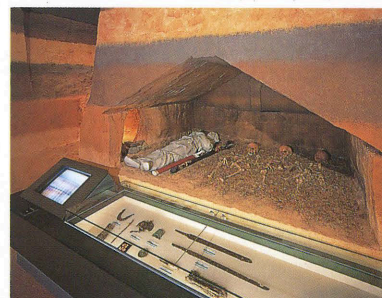
(National treasure)



Petal-shaped Hut (Replica)



Replica of Earth Oven



Underground cave-style burial mounds

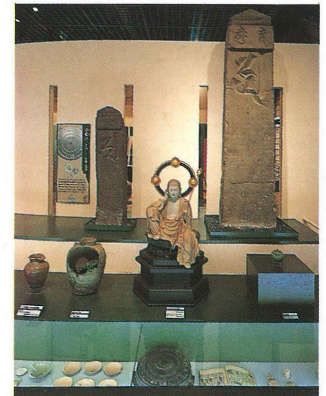
From Ancient to Early Modern Times

By such means as video and audio equipment and search machines, this corner shows the daily lives of common people in the Province of Hyuga (now Miyazaki Prefecture), and the development of local cultures. By seeing, hearing, and touching panels, visitors can learn about the kind of life people led in Hyuga Province during the civil-war period (the 15th to 16th centuries); during the Edo Period (1603 - 1868), when four small provinces were established in this region; and after the Meiji Restoration (1868), when radical modernization took place.

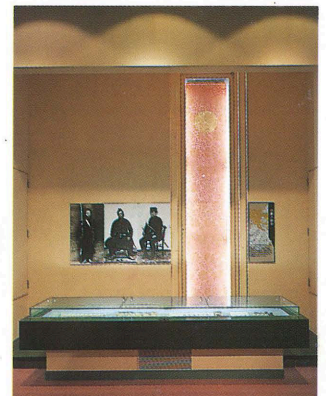
- **Birth of Hyuga Province**
- **Manor and daily lives of common people**
Daily lives of warriors and common people in Medieval Ages
Folding screen depicting Mimikawa Battle
- **Provinces of Hyuga**
Peasants' uprising
Boshin War, which paved the way for the Meiji Restoration, and the Imperial Banner



Tower for Dead Spirit, and a Folding Screen Depicting Mimikawa Battle



Religion in the Medieval Age



Imperial Banner and Related Documents

Continuous Development of Miyazaki Prefecture

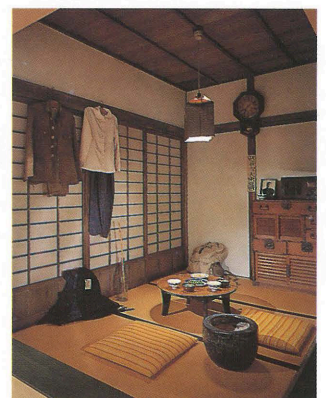
During the past few centuries, Miyazaki underwent drastic changes in social systems and the daily lives of people. This corner introduces such radical changes, by classifying the history from modern times to present days into three epochs. Historical documents, and photographs of the times are displayed, together with replicas and models.

In other corners, historical figures of Miyazaki and other important items are introduced in accordance with specific themes, regardless of the particular age they belonged to.

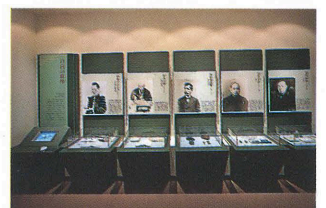
- **Birth and development of Miyazaki Prefecture**
Independence movement
Collage representing modernization
- **Miyazaki during the World War II**
Materials and tools used during the war
- **Revival and development after the World War II**
Modern two-room Japanese house of the latter half of the 1950's and a square
- **Important figures of Hyuga**



Jidai (time) Square



Daily Lives during the War



Important Figures of Hyuga

Permanent Exhibition: Folklore

Introduction to Folklore

This exhibition introduces Miyazaki's rich natural blessings and the daily lives of local people, by displaying a charcoal kiln, a symbol of Miyazaki's natural, geographical, and historical characteristics. The videotape titled "Kokoro Road" shows annual events and festivals, which represent spiritual aspects of local people.

- Models of a charcoal burning kiln and a hut for charcoal burners in Kitaura Town
- Four seasons of Miyazaki (film)
- Sadowara dolls



Invitation to Folklore

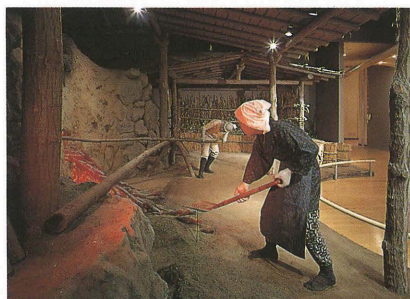
Life in a Mountain Village

This corner shows the daily lives of people in mountain villages, by displaying manufacturing tools that have been designated by the nation as important tangible folklore properties. The tools indicate local villagers' inventions to effectively use natural blessings, wishes for better lives, gratitude for the natural blessings, and close relationship with nature.

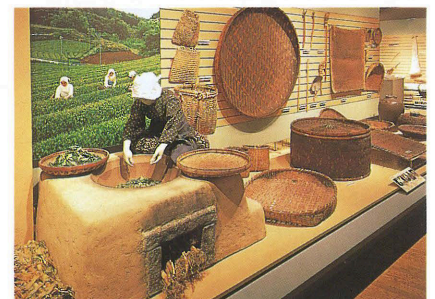


Exhibition of Life in a Mountain Village

- A farmer's hut in Nishimera Village
- A scene of roasting tea leaves in Gokase Town
- Sweetfish catching in Kitagawa Town
- Wood cutting in Aya Town
- Daily lives in mountain villages in photos and films



A Model of a Charcoal Kiln



Roasting Tea Leaves

Life in a Farm Village

This corner introduces daily lives of people living in river basins and a plain. Exhibits show agricultural technologies that have been passed on from previous generations, farmers' wishes for rich crops and gratitude for natural blessings, and deep relationship among community members.

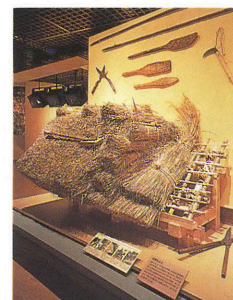


Exhibition of Life in a Farm Village

- Hunting wild ducks at a pond
- A model of a mill
- Model of a straw roof
- Tools used for agricultural rituals and ceremonies
- Life of a farm village in photos and films



Hunting Wild Ducks



Model of a Straw thatched roof

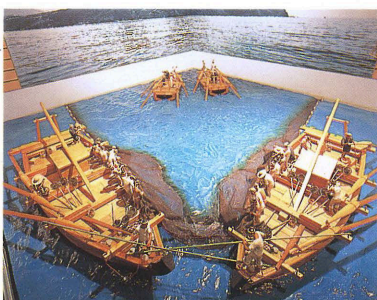
Life in a Fishing Village

This corner introduces daily lives of people living on the Hyuga Sea coast, which has complex inlets and extensive sand beaches. Exhibits show fishing technologies inherited from previous generations, villagers' wishes for good catches and safety of navigation, and close human relationship developed through peddling and fish market business.

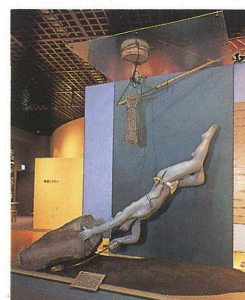


Exhibition of Life in a Fishing Village

- Fishing for flying fish near Cape Toi
- Diving for fishing near Aoshima Island
- New Year and full-moon festival decorations, and ship flags
- Tools used by peddlers
- Life in a fishing village in photos and films



Catching Flying Fish

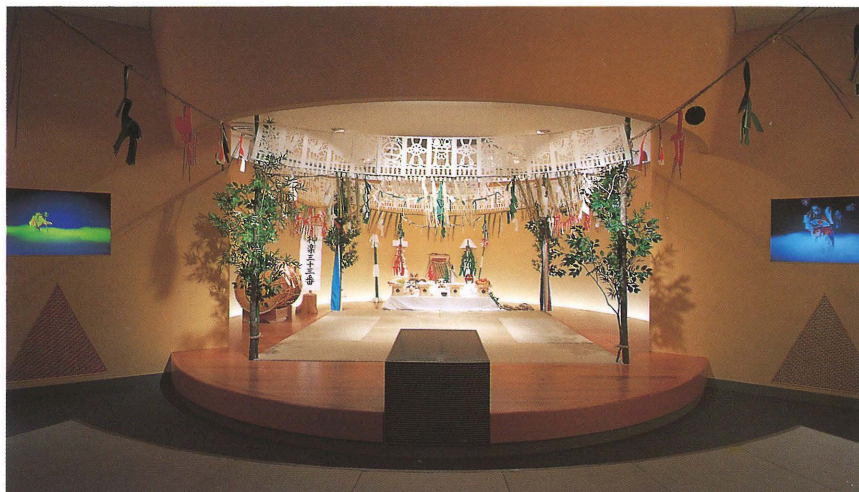


Diving for Fishing near Aoshima Island

Permanent Exhibition: Folklore

People's Prayers, and Festivals

For people in mountain, farm, and fishing villages, praying to gods for a good harvest and peaceful daily lives was equally important as their daily tasks. Even today, people observe seasonal festivals and annual events to pray to gods.



Inside the Kagura Theater

- **Kagura** (sacred music and dance) Theater
- Reproduced sacred **kagura** stage and straw festoon
- **Kagura** masks
- Introduction of folk performing arts and annual events



Kagura Masks



Sacred Straw Festoon

Special Exhibition Room

Special exhibitions are held concerning natural and human histories of Japan and other countries.



Special Exhibition of Silkroad and Central Asian Artifacts held in 1995

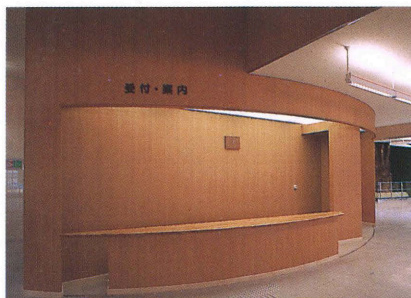


Special Exhibition of Perishing Plants in Japan held in 1995

Information on Other Rooms

◆Reception and Information Counter

This counter sells tickets, and provides general information on the Museum.



◆Tourist Information Corner

This corner provides tourist information, including information on cultural properties (designated by national, prefectural, and municipal governments); museums of fine arts and historical materials; castles, old gates, stone bridges, and other historical sites; and flower gardens and huge trees in Miyazaki Prefecture.



◆Information Room

This room comprises a small library, and corners of specimen, films, personal computers, together with an "experience" corner, all permitting visitors to study more about exhibitions.



◆Seminar Room 1

This seminar room (80 seats) with audio-video equipment, is used for promoting the Museum's activities.



◆Seminar Room 2

This seminar room (30 seats) permits holding lectures, experiments, and observations.



Facilities Attached to the Museum

◆Traditional Folk Houses

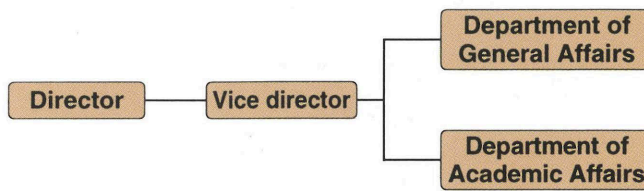
Opened : 1973 - 1978

Address : 4-4, Jingu 2-chome, Miyazaki-shi

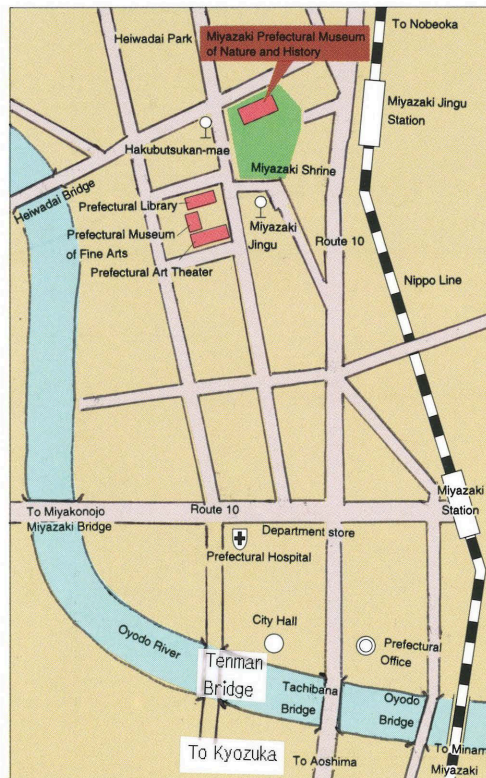
Features: Folk houses of unique designs built 150 - 200 years ago have been relocated to this site from around the Prefecture. The houses include two important cultural properties and two additional tangible cultural properties designated by the national and prefectural governments respectively.



Organization Chart



Visitor Information



Open: 9:00a.m.-5:00p.m.(last entry at 4:30p.m.)

Closed: Tuesdays(Wednesday when Tuesday falls on a holiday'), days following national holidays(if it falls on Saturday, Sunday,or other holidays,the following day),and from December 28 to January 4

Admission: Free

Access: ●10-minute walk from JR Miyazaki Jingu Station
●10-minute walk from Miyazaki Kotsu Bus Miyazaki Jingu Stop(teaminal stop)
1-minute walk from Miyazaki kotsu Bus Hakubutsukan-mae Stop of the bus line bound for Aya,Kunitomi, Heiwagaoka



Miyazaki Prefectural Museum of Nature and History

4-4, Jingu 2-chome, Miyazaki-shi, 880-0053 Tel: 0985-24-2071 Fax: 0985-24-2199